

State of Rhode Island and Providence Plantations

Budget



Fiscal Year 2015

Volume IV – Public Safety, Natural Resources
and Transportation

Lincoln D. Chafee, Governor

Dedication

*This year's budget documents are dedicated to the
Memory of William V. Golas, Jr.
Sr. Budget Analyst 1987 - 2013*

The image on the cover of this year's budget document is a Winter Scene of the State House from Artist John Pitocco of Providence and is reproduced by permission of the artist in collaboration with the Rhode Island State Council on the Arts.

Agency

Judicial Department - Constitution

Agency Mission

In our mission to administer justice while maintaining our independence, we are duty bound to act with unfailing honor to serve and protect the ideals of democracy for the citizens of this state.

Agency Description

Rhode Island has a unified court system composed of six statewide courts. The Supreme Court is the court of last resort, the Superior Court is the court of general jurisdiction, and the Family, District, Traffic Tribunal, and Workers' Compensation Courts are courts of limited jurisdiction.

The entire system in Rhode Island is state-funded with the exception of probate courts, which are the responsibility of cities and towns, and the municipal courts, which are local courts of limited jurisdiction. The Chief Justice of the Supreme Court is the executive head of the Rhode Island Judiciary and has authority over the judicial budget. The Chief Justice appoints the State Court Administrator and an administrative staff to handle budgetary and general administrative functions. Under the direction of the Chief Justice, the State Court Administrator has control of judicial appropriations for all state courts, except those as provided otherwise by law. Each court has responsibility over its own operations and has a chief judge who appoints an administrator to handle internal court management.

Statutory History

The Judicial is one of the three branches of government defined in the Rhode Island Constitution. The powers and jurisdictions of the six courts are identified in the Rhode Island General Laws as follows: Title 8 Chapter 1, Supreme Court; Title 8 Chapter 2, Superior Court; Title 8 Chapter 10, Family Court; Title 8 Chapter 8, District Court; Title 28 Chapter 30, Workers' Compensation Court; and, Title 8 Chapter 8.2, Traffic Tribunal.

The budgetary and finance controls of the Judiciary are identified in the Rhode Island General Laws as follows: Title 8 Section 8-15-4, Appointment of Court Administrator and Assistants; Title 35 Section 35-3-1, Budget Officer – General Powers and Duties; Title 36 Section 36-4-2.1, Exemption from Merit System; Title 36 Section 36-4-16.4, Salaries of Directors, Judges, and Workers' Compensation Judges; Title 36 Section 36-6-1, Controller – Duties in General; and Title 37 Section 37-8-1, State House – State Office Building – Courthouses.

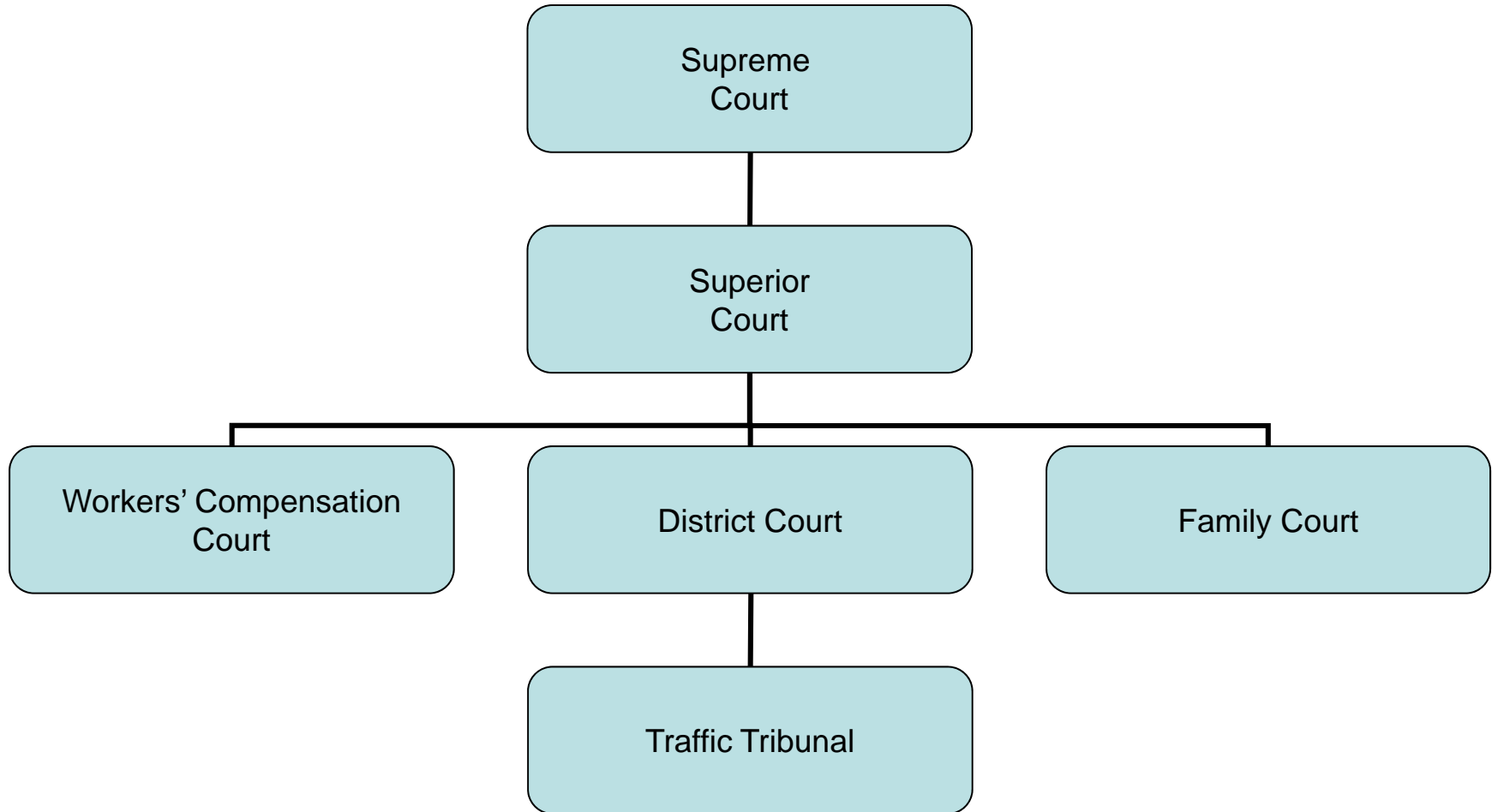
Budget

Judicial Department - Constitution

	FY 2012 Audited	FY 2013 Audited	FY 2014 Enacted	FY 2014 Revised	FY 2015 Recommend
Expenditures By Program					
Supreme Court	31,878,887	35,142,134	34,927,854	35,449,115	33,730,617
Superior Court	21,855,277	21,804,400	22,695,509	22,371,420	22,708,957
Family Court	20,027,371	19,834,155	21,109,265	20,726,785	20,955,333
District Court	11,643,985	11,825,392	12,843,456	12,415,149	12,291,337
Traffic Tribunal	8,192,012	7,933,583	8,090,350	8,580,578	8,760,119
Worker's Compensation Court	7,204,814	7,359,644	7,842,060	7,834,530	7,932,640
Judicial Tenure & Discipline	105,450	113,327	115,627	115,054	115,513
Total Expenditures	\$100,907,796	\$104,012,635	\$107,624,121	\$107,492,631	\$106,494,516
Expenditures By Object					
Personnel	78,286,142	77,958,128	82,729,796	82,232,612	83,046,565
Operating Supplies and Expenses	10,618,217	11,416,578	9,877,792	10,317,221	10,607,659
Assistance and Grants	10,198,781	10,470,823	11,315,642	11,022,031	10,851,188
Subtotal: Operating Expenditures	99,103,140	99,845,529	103,923,230	103,571,864	104,505,412
Capital Purchases and Equipment	1,804,656	4,167,106	3,700,891	3,920,767	1,989,104
Total Expenditures	\$100,907,796	\$104,012,635	\$107,624,121	\$107,492,631	\$106,494,516
Expenditures By Funds					
General Revenue	87,723,958	87,871,336	91,681,359	91,405,406	92,421,668
Federal Funds	2,377,916	2,043,111	2,624,248	2,063,760	1,909,247
Restricted Receipts	9,731,044	10,393,917	11,803,514	11,838,182	10,813,601
Operating Transfers from Other Funds	1,074,878	3,704,271	1,515,000	2,185,283	1,350,000
Total Expenditures	\$100,907,796	\$104,012,635	\$107,624,121	\$107,492,631	\$106,494,516
FTE Authorization	723.3	723.3	726.3	726.3	726.3

The Agency

Judicial Department



Personnel

Judicial Department - Constitution Agency Summary

	Grade	FY 2014		FY 2015	
		FTE	Cost	FTE	Cost
Unclassified		726.4	52,214,565	726.4	52,445,343
Subtotal		726.4	\$52,214,565	726.4	\$52,445,343
Overtime		-	425,436	-	407,437
Turnover		-	(\$2,047,356)	-	(\$2,212,903)
Subtotal		-	(\$1,621,920)	-	(\$1,805,466)
Total Salaries		726.4	\$50,592,645	726.4	\$50,639,877
Benefits					
Payroll Accrual			200,461		200,866
FICA			3,564,312		3,600,774
Retiree Health			2,634,722		2,517,610
Health Benefits			8,474,102		9,120,660
Retirement			12,476,430		12,718,391
Workers Compensation			1,800		1,800
Subtotal			\$27,351,827		\$28,160,101
Total Salaries and Benefits		726.4	\$77,944,472	726.4	\$78,799,978
Cost Per FTE Position (Excluding Temporary and Seasonal)			\$107,308		\$108,486
Statewide Benefit Assessment			\$2,129,894		\$2,136,774
Payroll Costs		726.4	\$80,074,366	726.4	\$80,936,752
Purchased Services					
Information Technology			451,151		451,151
Clerical and Temporary Services			583,314		563,296
Management & Consultant Services			76,000		76,000
Legal Services			435,349		435,349
Other Contracts			426,101		397,686
Training and Educational Services			101,298		101,298
Design and Engineering Services			73,033		73,033
Medical Services			12,000		12,000
Subtotal			\$2,158,246		\$2,109,813
Total Personnel		726.4	\$82,232,612	726.4	\$83,046,565
Distribution By Source Of Funds					
General Revenue		650.4	\$71,579,342	650.4	\$72,364,760
Federal Funds		12.9	\$1,860,927	12.9	\$1,832,128
Restricted Receipts		63.0	\$8,792,343	63.0	\$8,849,677
Total All Funds		726.4	\$82,232,612	726.4	\$83,046,565

The Program

Judicial Department - Constitution Supreme Court

Program Mission

Provide timely review of all decisions appealed from the lower courts.

Provide overall administrative direction to the unified court system.

Regulate the admission, registration, and discipline of attorneys to the Rhode Island Bar.

Program Description

The Supreme Court Program includes the budget for the Court as well as the Administrative Office of State Courts, and the State Law Library.

The Court portion of the budget covers the justices, their secretarial and legal staff, the law clerk department, and the Supreme Court Clerk's Office. Through this portion of the budget the Supreme Court fulfills its role as the court of last resort. The Court also renders advisory opinions to the legislative and executive branches of government; issues writs of habeas corpus, mandamus, certiorari and certain other prerogative writs; and regulates the admission, registration and discipline of members of the Rhode Island Bar.

Administrative services include all budgetary, personnel and purchasing functions; technology services; facilities and operations, which includes the maintenance of courthouse and judicial buildings as well as security; programming for judicial education; the collection of court-ordered restitution, fines, fees and costs; judicial records center; and research and statistical analysis.

The State Law Library is the only complete, public legal reference service in Rhode Island, and it operates under the Supreme Court. The Library has over 110,000 volumes and also provides access to computer aided legal research.

Other major activities of the Supreme Court include domestic violence training and monitoring, mandatory continuing legal education, appellate screening, alternative dispute resolution, disciplinary counsel, community outreach and public relations, and the interpreter program.

Statutory History

The Supreme Court is the only constitutionally established court and is identified in Article X of the Rhode Island State Constitution. The organization, jurisdiction and powers of the Supreme Court are described in Title 8 Chapter 1 of the Rhode Island General Laws, and the administrative authority of the court is established by Title 8 Chapter 15. Other statutes relating to the Supreme Court include Title 8 Chapters 3 through 7 of the Rhode Island General Laws.

The Budget

Judicial Department - Constitution Supreme Court

	2012 Audited	2013 Audited	2014 Enacted	2014 Revised	2015 Recommend
Expenditures By Subprogram					
Supreme Court Operations	28,630,707	31,750,390	31,365,614	31,906,875	30,188,377
Defense of Indigents	3,248,180	3,391,744	3,562,240	3,542,240	3,542,240
Total Expenditures	\$31,878,887	\$35,142,134	\$34,927,854	\$35,449,115	\$33,730,617
Expenditures By Object					
Personnel	18,614,049	18,899,162	19,706,696	19,669,385	19,796,444
Operating Supplies and Expenses	7,636,444	7,982,434	6,869,590	7,197,348	7,463,567
Assistance and Grants	4,238,918	4,260,777	4,893,285	4,743,615	4,563,502
Subtotal: Operating Expenditures	30,489,411	31,142,373	31,469,571	31,610,348	31,823,513
Capital Purchases and Equipment	1,389,476	3,999,761	3,458,283	3,838,767	1,907,104
Total Expenditures	\$31,878,887	\$35,142,134	\$34,927,854	\$35,449,115	\$33,730,617
Expenditures By Funds					
General Revenue	29,628,646	29,009,184	29,783,782	29,664,709	29,942,882
Federal Funds	101,870	75,622	272,163	190,651	151,954
Restricted Receipts	1,073,493	2,353,057	3,356,909	3,408,472	2,285,781
Operating Transfers from Other Funds	1,074,878	3,704,271	1,515,000	2,185,283	1,350,000
Total Expenditures	\$31,878,887	\$35,142,134	\$34,927,854	\$35,449,115	\$33,730,617

Personnel

Judicial Department - Constitution Supreme Court

	Grade	FY 2014		FY 2015	
		FTE	Cost	FTE	Cost
Unclassified					
CHIEF JUSTICE (SUPREME COURT)	08809F	1.0	218,760	1.0	218,760
ASSOCIATE JUSTICE	08808F	4.0	745,766	4.0	745,766
STATE COURT ADMINISTRATOR	08848A	1.0	165,125	1.0	165,125
CHIEF DISCIPLINARY COUNSEL	08844A	1.0	143,555	1.0	143,555
EXECUTIVE ASSISTANT FOR POLICY AND	08843A	1.0	139,986	1.0	139,986
EXECUTIVE DIRECTOR (JUDICIAL)	08844A	1.0	138,844	1.0	138,844
DIRECTOR OF FINANCE/ASSOCIATE	08844A	1.0	138,415	1.0	138,415
DEPUTY ADMINISTRATOR (STATE COURTS)	08845A	1.0	136,530	1.0	136,530
CHIEF SUPERVISORY CLERK	08842A	2.0	254,472	2.0	254,472
DEPUTY EXECUTIVE	08841A	2.0	254,094	2.0	254,094
CLERK PRO-TEMPORE	08841A	1.0	111,453	1.0	111,453
ASSISTANT ADMINISTRATOR/POLICY & PROGRAMS	04437A	1.0	105,714	1.0	105,714
DEPUTY DISCIPLINARY COUNSEL	08837A	1.0	105,551	1.0	105,551
ASSISTANT ADMINISTRATOR/POLICY & PROGRAMS	08837A	1.0	103,928	1.0	103,928
ASSISTANT DIRECTOR POLICY OFFICE	08839A	6.0	616,978	6.0	616,978
DIRECTOR OF CONSUMER	08835A	1.0	98,986	1.0	98,986
PUBLIC INFORMATION OFFICER	04435A	1.0	98,440	1.0	98,440
PRINCIPAL COURT FUNCTIONAL SPECIALIST	04436A	1.0	97,822	1.0	97,822
STAFF ATTORNEY IV	00834A	1.0	94,729	1.0	94,729
CHIEF STAFF ATTORNEY	08835A	2.0	184,121	2.0	184,121
SOFTWARE SUPPORT SPECIALIST	04433A	5.0	452,707	5.0	452,707
ASSISTANT DISCIPLINARY COUNSEL	08831A	2.0	170,055	2.0	170,055
SENIOR DEVELOPER (JUDICIAL)	08835A	1.0	82,403	1.0	82,403
STAFF ATTORNEY II	08830A	2.0	164,051	2.0	164,051
EXECUTIVE DIRECTOR/EXECUTIVE	08831A	1.0	81,473	1.0	81,473
ADMINISTRATIVE CLERK	08829A	1.0	81,176	1.0	81,176
PROJECT MANAGER	04430A	5.0	398,001	5.0	398,001
PRINCIPAL SUPERVISORY CLERK	08830A	2.0	155,744	2.0	155,744
ADMINISTRATIVE ASSISTANT	04429A	3.0	230,559	3.0	230,559
SPECIAL ASSISTANT	08829A	2.0	152,717	2.0	152,717
ASSISTANT ADMINISTRATOR/MANAGEMENT AND	08834A	1.0	73,894	1.0	77,178
STAFF ATTORNEY	08829A	4.7	342,607	4.7	342,607
DEPUTY LAW LIBRARIAN	04426A	1.0	70,189	1.0	70,189
PROJECT MANAGER (JUDICIAL)	08830A	2.0	140,341	2.0	140,341
PRINCIPAL DEPUTY CLERK (SYSTEMS)	05725A	1.0	69,872	1.0	69,872
FISCAL MANAGEMENT OFFICER (JUDICIAL)	08832A	1.0	69,353	1.0	72,781
BAR ADMINISTRATOR (JUDICIAL)	08829A	1.0	69,180	1.0	69,180
CONFIDENTIAL INVESTIGATOR	08831A	2.0	137,458	2.0	139,659
COORDINATOR, SPECIAL PROJECTS	08827A	6.0	403,717	6.0	403,717
PRINCIPAL ASSISTANT ADMINISTRATOR	08825A	1.0	66,112	1.0	66,112
SPECIAL ASSISTANT	04429A	1.0	63,793	1.0	67,209
ADMINISTRATIVE CLERK OF OFFICE SERVICES	04427A	2.0	125,871	2.0	125,871
PRINCIPAL ADMINISTRATIVE CLERK	04425A	2.0	124,672	2.0	124,672
PRINCIPAL DEPUTY CLERK (SYSTEMS)	08825A	1.0	61,891	1.0	61,891
SPECIAL ASSISTANT (JUDICIAL)	08829A	1.0	61,486	1.0	64,324

Personnel

Judicial Department - Constitution Supreme Court

	Grade	FY 2014		FY 2015	
		FTE	Cost	FTE	Cost
OFFICE MANAGER	04424A	3.0	178,888	3.0	178,888
PRINCIPAL ASSISTANT ADMINISTRATOR	08825A	2.0	118,156	2.0	118,156
ASSISTANT BUILDING & GROUNDS OFFICER	00322A	4.0	233,389	4.0	233,389
MONITORING & EVALUATION SPECIALIST	08823A	2.0	115,456	2.0	116,862
SENIOR MONITORING AND EVALUATION	08825A	2.0	115,343	2.0	115,343
OFFICE MANAGER (JUDICIAL)	08824A	1.0	56,676	1.0	56,676
EXECUTIVE SECRETARY	04423A	1.0	55,131	1.0	55,131
SENIOR MANAGEMENT ANALYST	04423A	5.0	273,818	5.0	273,818
LAW CLERK (JUDICIARY)	08823A	16.0	835,043	16.0	835,043
ASSISTANT SUPERVISING CLERK	04422A	3.0	156,240	3.0	156,240
CHAMBER LAW CLERK (JUDICIAL)	08823A	10.0	518,660	10.0	518,660
LAW CLERK (JUDICIARY)	00823A	1.0	51,866	1.0	51,866
ADMINISTRATIVE ASSISTANT	08822A	4.0	207,275	4.0	207,275
MONITORING & EVALUATION SPECIALIST	00823A	1.0	50,460	1.0	51,866
SENIOR MANAGEMENT ANALYST (JUDICIAL)	04423A	2.0	100,569	2.0	102,184
SENIOR ADMINISTRATIVE AIDE	04421A	0.6	29,214	0.6	29,214
ADMINISTRATIVE AIDE	04416A	1.0	48,274	1.0	48,274
DEPUTY CLERK	04420A	5.0	240,219	5.0	240,219
RECORDS CUSTODIAN-DOCUMENTS DIST.(STATE	04418A	3.0	142,561	3.0	142,561
ADMINISTRATIVE ASSISTANT II	08815A	1.0	47,080	1.0	47,080
CONFIDENTIAL SECRETARY	08817A	1.0	45,963	1.0	45,963
ADMINISTRATIVE ASSISTANT II (JUDICIAL)	08820A	1.0	45,875	1.0	47,514
RECORDS CUSTODIAN DOCUMENTS DISTRIBUTION	04418A	1.0	45,498	1.0	45,498
FACILITIES AND OPERATIONS OFFICER	00320A	2.0	89,565	2.0	92,765
ADMINISTRATIVE ASSISTANT II	04415A	2.0	87,387	2.0	87,387
SECOND ASSISTANT LAW LIBRARIAN	04411A	0.8	31,917	0.8	31,917
PRINCIPAL CLERK TYPIST	04410A	1.0	34,857	1.0	34,857
RECORDS CLERK/DATA ENTRY AIDE	04410A	1.0	32,662	1.0	33,197
JANITOR (JUDICIAL)	00307A	1.0	31,679	1.0	32,143
ADMINISTRATIVE AIDE	08810A	0.6	17,472	0.6	17,472
Subtotal		161.7	\$11,839,784	161.7	\$11,865,216
Overtime		-	294,249	-	276,250
Turnover		-	(164,848)	-	(165,246)
Subtotal		-	\$129,401	-	\$111,004
Total Salaries		161.7	\$11,969,185	161.7	\$11,976,220
Benefits					
Payroll Accrual			46,698		46,557
FICA			858,107		863,603
Retiree Health			713,542		673,230
Health Benefits			1,973,789		2,127,686
Retirement			2,875,889		2,919,984
Subtotal			\$6,468,025		\$6,631,060

Personnel

Judicial Department - Constitution Supreme Court

	Grade	FY 2014		FY 2015	
		FTE	Cost	FTE	Cost
Total Salaries and Benefits		161.7	\$18,437,210	161.7	\$18,607,280
Cost Per FTE Position (Excluding Temporary and Seasonal)			\$114,021		\$115,073
Statewide Benefit Assessment			\$496,183		\$497,249
Payroll Costs		161.7	\$18,933,393	161.7	\$19,104,529
Purchased Services					
Information Technology			382,451		382,451
Clerical and Temporary Services			83,925		68,781
Legal Services			87,185		87,185
Other Contracts			95,379		66,446
Training and Educational Services			23,000		23,000
Design and Engineering Services			64,052		64,052
Subtotal			\$735,992		\$691,915
Total Personnel		161.7	\$19,669,385	161.7	\$19,796,444
Distribution By Source Of Funds					
General Revenue		150.7	\$17,651,143	150.7	\$17,832,948
Federal Funds		1.0	\$183,456	1.0	\$151,885
Restricted Receipts		10.0	\$1,834,786	10.0	\$1,811,611
Total All Funds		161.7	\$19,669,385	161.7	\$19,796,444

Performance Measures

Judicial Department - Constitution Supreme Court

Disposition Rate of Appeal Cases

The figures below represent the disposition rate of appeal cases. For annual disposition rate, total dispositions should equal or exceed new appeals in order for the court to stay current with caseload. During a specified time period, if the court is able to dispose more cases than those filed, the disposition rate will exceed 100 percent, thereby reducing the number of cases pending (backlog).

	2011	2012	2013	2014	2015
Target	100%	100%	100%	100%	100%
Actual	102%	105%	133%	--	--

Performance for this measure is reported by calendar year and is current as of 6/30/2013.

The Program

Judicial Department - Constitution Superior Court

Program Mission

Provide timely and fair adjudication of all cases within the jurisdiction of the Superior Court.

Maintain a complete and accurate record for all cases that are filed with the Superior Court.

Provide a written transcript of any proceeding or appeal.

Program Description

The program budget for Superior Court includes the operation of the Court itself, administrative services, and the operation of the clerks' offices.

Superior Court has four locations: Providence/Bristol, Kent, Washington, and Newport Counties. It has jurisdiction over all felony cases and misdemeanor cases which have been appealed or waived from the District Court. The Court also hears all civil cases where the amount at issue exceeds \$10,000, equity cases wherein injunctive relief is sought, civil cases that are appealed from the District Court, and all probate and zoning appeals. The Superior Court has concurrent original jurisdiction with the District Court in all other actions at law in which the amount in controversy exceeds \$5,000 yet does not exceed \$10,000. The administrative office of the Court handles all case scheduling, supervises the court secretaries and stenographers, and provides other administrative services.

Each Court location has a clerk's office which is responsible for maintaining the records of the court. This includes creating files for each case, filing all papers that are received, updating the record in each case to reflect court proceedings and the papers that have been filed, and maintaining and marking all exhibits of evidence.

Other major programs include jury selection, court-annexed arbitration, court ordered restitution, and administration of jurors' fees and expenses. In FY 1995, a Gun Court was established to adjudicate offenses where guns are involved and the planning process began for the Adult Drug Court. In FY 2002, the Adult Drug Court was established preceded by the FY 2001 establishment of the Business Calendar.

Statutory History

The Superior Court is a statutorily authorized court. The jurisdiction and sessions of the court, and the role and responsibilities of the clerks, secretaries and stenographers of the court are outlined in Title 8 Chapters 2 through 7 of the Rhode Island General Laws.

The Budget

Judicial Department - Constitution Superior Court

	2012 Audited	2013 Audited	2014 Enacted	2014 Revised	2015 Recommend
Expenditures By Subprogram					
Superior Court Operations	20,296,547	20,181,982	20,799,642	20,594,929	20,908,191
Jury Operations	1,558,730	1,622,418	1,895,867	1,776,491	1,800,766
Total Expenditures	\$21,855,277	\$21,804,400	\$22,695,509	\$22,371,420	\$22,708,957
Expenditures By Object					
Personnel	18,043,945	18,034,115	18,754,986	18,582,004	18,944,305
Operating Supplies and Expenses	1,329,728	1,252,975	1,225,447	1,145,104	1,145,063
Assistance and Grants	2,350,611	2,491,628	2,652,186	2,632,312	2,607,589
Subtotal: Operating Expenditures	21,724,284	21,778,718	22,632,619	22,359,420	22,696,957
Capital Purchases and Equipment	130,993	25,682	62,890	12,000	12,000
Total Expenditures	\$21,855,277	\$21,804,400	\$22,695,509	\$22,371,420	\$22,708,957
Expenditures By Funds					
General Revenue	21,341,828	21,487,253	22,294,581	21,929,881	22,359,027
Federal Funds	65,573	110,376	94,205	139,161	47,552
Restricted Receipts	447,876	206,771	306,723	302,378	302,378
Total Expenditures	\$21,855,277	\$21,804,400	\$22,695,509	\$22,371,420	\$22,708,957

Personnel

Judicial Department - Constitution Superior Court

	Grade	FY 2014		FY 2015	
		FTE	Cost	FTE	Cost
Unclassified					
PRESIDING JUSTICE (SUPERIOR COURT)	08807F	1.0	196,954	1.0	196,954
ASSOCIATE JUSTICE	08805F	21.0	3,502,633	21.0	3,502,633
SPECIAL MAGISTRATE	08803F	1.0	164,379	1.0	164,379
MAGISTRATE	08803F	3.0	482,644	3.0	482,644
ADMINISTRATIVE CLERK	08846A	1.0	154,340	1.0	154,340
GENERAL MAGISTRATE	08803F	1.0	153,887	1.0	153,887
CLERK (PROVIDENCE COUNTY)	08839A	1.0	120,434	1.0	120,434
JURY COMMISSIONER	08837A	1.0	106,120	1.0	106,120
ADMINISTRATOR, ARBITRATION PROGRAM	08839A	1.0	97,162	1.0	97,162
GENERAL CHIEF CLERK	08835A	1.0	90,644	1.0	90,644
CLERK (NEWPORT COUNTY)	08832A	1.0	88,759	1.0	88,759
DEPUTY ADMINISTRATOR/CLERK	08834A	1.0	87,519	1.0	87,519
CONFIDENTIAL INVESTIGATOR	08831A	1.0	83,671	1.0	83,671
CLERK (WASHINGTON COUNTY)	08832A	1.0	81,362	1.0	81,362
CLERK (KENT COUNTY)	00834A	1.0	79,563	1.0	79,563
ADMINISTRATIVE CLERK	08829A	2.0	156,945	2.0	156,945
ASSISTANT ADMINISTRATOR/MANAGEMENT AND	08834A	2.0	156,293	2.0	159,263
ASSOCIATE JURY COMMISSIONER	08833A	1.0	76,708	1.0	76,708
SPECIAL ASSISTANT (JUDICIAL)	08829A	1.0	72,345	1.0	75,734
PROJECT MANAGER	08830A	2.0	141,817	2.0	144,497
PROJECT COORDINATOR	04426A	1.0	68,769	1.0	68,769
SUPERVISING CLERK	08826A	2.0	136,807	2.0	136,807
SUPERVISING CLERK	04426A	1.0	66,752	1.0	66,752
COURT REPORTER	00127A	28.0	1,859,696	28.0	1,870,228
COORDINATOR, SPECIAL PROJECTS	08827A	1.0	63,232	1.0	63,985
PRINCIPAL ASSISTANT ADMINISTRATOR	04425A	1.0	62,737	1.0	66,015
SUPERVISING DEPUTY CLERK	08826A	1.0	61,485	1.0	61,485
ASSISTANT SUPERVISING CLERK	04422A	2.0	119,303	2.0	119,303
ASSISTANT MANAGER OF CALENDAR SERVICES	04423A	1.0	59,371	1.0	61,395
MANAGER OF CALENDAR SERVICES (PROVIDENCE)	04424A	1.0	59,200	1.0	62,188
ASSISTANT MANAGER OF CALENDAR SERVICES	04423A	1.0	58,890	1.0	58,890
SENIOR ADMINISTRATIVE AIDE	04421A	1.0	55,866	1.0	55,866
DEPUTY CLERK I	04424A	4.0	222,348	4.0	223,951
PRODUCTION SYSTEMS SPECIALIST	04420A	1.0	54,126	1.0	54,126
ASSISTANT ADMINISTRATIVE OFFICER	08821A	1.0	52,931	1.0	52,931
LAW CLERK (JUDICIARY)	08823A	1.0	51,866	1.0	51,866
MONITORING & REVALUATION SPECIALIST (JUD)	08823A	2.0	103,526	2.0	105,763
MANAGER OF CALENDAR SERVICES (OUT	04424A	1.0	49,007	1.0	50,668
DEPUTY CLERK	04420A	5.0	243,054	5.0	244,216
DEPUTY CLERK (SUPERIOR COURT)	04420A	20.0	967,305	20.0	974,643
COURT SECRETARY/JUDICIAL, SUPERIOR COURT	08823A	1.0	47,859	1.0	47,859
CONFIDENTIAL SECRETARY	08817A	1.0	45,963	1.0	45,963
ADMINISTRATIVE AIDE	04416A	1.0	45,340	1.0	45,340
ELECTRONIC COURT REPORTER	04419A	1.0	44,895	1.0	44,895
ELECTRONIC COURT REPORTER	00119A	1.7	76,069	1.7	77,094

Personnel

Judicial Department - Constitution Superior Court

	Grade	FY 2014		FY 2015	
		FTE	Cost	FTE	Cost
ASSISTANT COURT SECRETARY/JUDICIAL	08821A	3.0	132,459	3.0	136,603
POLICY AIDE	04418A	4.0	175,972	4.0	180,886
SENIOR ADMINISTRATIVE AIDE	04417A	1.0	42,039	1.0	42,039
ADMINISTRATIVE ASSISTANT II	08815A	1.0	41,270	1.0	41,270
ASSISTANT CLERK (SUPERIOR COURT)	04418A	8.0	327,393	8.0	332,847
ADMINISTRATIVE ASSISTANT	08814A	1.0	38,154	1.0	38,277
ADMINISTRATIVE AIDE	04415A	1.0	37,558	1.0	37,558
GENERAL OPERATIONS ASSISTANT	04414A	9.0	314,444	9.0	319,306
RECORDS CLERK/DATA ENTRY AIDE	04410A	10.0	314,468	10.0	320,105
DATA ENTRY AIDE (JUDICIAL)	04410A	1.0	27,816	1.0	28,339
Subtotal		165.7	\$12,222,149	165.7	\$12,291,446
Overtime		-	41,385	-	41,385
Turnover		-	(598,550)	-	(553,114)
Subtotal		-	(\$557,165)	-	(\$511,729)
Total Salaries		165.7	\$11,664,984	165.7	\$11,779,717
Benefits					
Payroll Accrual			46,298		46,953
FICA			805,132		823,636
Retiree Health			527,514		513,042
Health Benefits			1,727,021		1,878,627
Retirement			2,884,841		2,980,488
Subtotal			\$5,990,806		\$6,242,746
Total Salaries and Benefits		165.7	\$17,655,790	165.7	\$18,022,463
Cost Per FTE Position (Excluding Temporary and Seasonal)			\$106,553		\$108,766
Statewide Benefit Assessment			\$491,911		\$498,879
Payroll Costs		165.7	\$18,147,701	165.7	\$18,521,342
Purchased Services					
Clerical and Temporary Services			91,141		79,801
Legal Services			311,631		311,631
Other Contracts			17,935		17,935
Design and Engineering Services			1,596		1,596
Medical Services			12,000		12,000
Subtotal			\$434,303		\$422,963
Total Personnel		165.7	\$18,582,004	165.7	\$18,944,305
Distribution By Source Of Funds					
General Revenue		165.7	\$18,232,863	165.7	\$18,606,504
Federal Funds		-	\$49,141	-	\$37,801
Restricted Receipts		-	\$300,000	-	\$300,000
Total All Funds		165.7	\$18,582,004	165.7	\$18,944,305

Performance Measures

Judicial Department - Constitution Superior Court

Civil Case Disposition Rate

The figures below represent the disposition rate of civil cases assigned to the trial calendar. Total dispositions should equal or exceed new cases each year in order for the court to stay current with the caseload. During a specified time period, if the court is able to dispose more cases than those filed, the disposition rate will exceed 100 percent, thereby reducing the number of cases pending (backlog).

	2011	2012	2013	2014	2015
Target	100%	100%	100%	100%	100%
Actual	128%	144%	155%	--	--

Performance for this measure is reported by calendar year and is current as of 6/30/2013.

Timeliness of Felony Cases Disposed

The figures below represent the percentage of felony cases disposed within 180 days of arraignment.

	2011	2012	2013	2014	2015
Target	75%	75%	75%	75%	75%
Actual	62%	57%	61%	--	--

Performance for this measure is reported by calendar year and is current as of 6/30/2013.

The Program

Judicial Department - Constitution Family Court

Program Mission

Adjudicate the cases within the jurisdiction of the Family Court in a timely and fair manner.

Provide counseling and other assistance to families involved in litigation before the court.

Program Description

The program budget for Family Court includes the operation of the Court itself, the administrative office of the Court, the clerks' offices, and the operation of several ancillary programs, including juvenile intake services, the Family Counseling Unit, the Collections Unit and the Court Appointed Special Advocate Unit.

The Family Court handles all criminal cases involving juveniles; juvenile status offenses, such as truancy and disobedience; all cases where parents have been charged with neglect, abandonment or abuse of their children; and other miscellaneous cases involving children, such as child marriages and paternity issues. The Court also hears all divorces and issues stemming from a divorce, such as orders for child support and temporary allowances.

The Court has offices in Providence, Kent, Newport and Washington Counties. There are clerks' offices in each of these locations, and the office staff is responsible for preparing all court calendars and maintaining records of the Court. All papers are filed with the clerk's office, and this office sets up a file for each case and maintains an up-to-date record of court proceedings and the papers that have been filed.

Because of the special nature of the Family Court, it provides a variety of services to families. For example, the Family Counseling Unit provides alcohol and drug screens and supervises visitation, in addition to providing investigative and mediation services to the court. The Child Support Collections Unit handles the collection and disbursement of child support payments. Specialty courts include the Juvenile Drug Court, the Family Treatment Drug Court, the Domestic Violence Court, the Truancy Court, the Mental Health Court Clinic, and the Juvenile Re-entry Court.

Statutory History

The Family Court is authorized by statute. The composition and jurisdiction of the Family Court is identified in Title 8 Chapter 10 of the Rhode Island General Laws.

The Budget

Judicial Department - Constitution Family Court

	2012 Audited	2013 Audited	2014 Enacted	2014 Revised	2015 Recommend
Expenditures By Subprogram					
Operations	20,027,371	19,834,155	21,109,265	20,726,785	20,955,333
Total Expenditures	\$20,027,371	\$19,834,155	\$21,109,265	\$20,726,785	\$20,955,333
Expenditures By Object					
Personnel	18,402,569	18,064,501	19,358,856	19,077,285	19,288,647
Operating Supplies and Expenses	509,053	614,084	467,145	488,348	488,329
Assistance and Grants	989,592	1,141,050	1,212,117	1,132,652	1,149,857
Subtotal: Operating Expenditures	19,901,214	19,819,635	21,038,118	20,698,285	20,926,833
Capital Purchases and Equipment	126,157	14,520	71,147	28,500	28,500
Total Expenditures	\$20,027,371	\$19,834,155	\$21,109,265	\$20,726,785	\$20,955,333
Expenditures By Funds					
General Revenue	17,147,852	18,030,704	18,851,385	18,992,837	19,245,592
Federal Funds	2,113,121	1,803,451	2,257,880	1,733,948	1,709,741
Restricted Receipts	766,398	-	-	-	-
Total Expenditures	\$20,027,371	\$19,834,155	\$21,109,265	\$20,726,785	\$20,955,333

Personnel

Judicial Department - Constitution Family Court

	Grade	FY 2014		FY 2015	
		FTE	Cost	FTE	Cost
Unclassified					
CHIEF JUDGE, FAMILY COURT	08807F	1.0	196,954	1.0	196,954
ASSOCIATE JUSTICE	08805F	11.0	1,849,382	11.0	1,849,382
MAGISTRATE	08803F	8.0	1,238,090	8.0	1,238,090
MAGISTRATE OF THE FAMILY COURT	08803F	1.0	153,887	1.0	153,887
ADMINISTRATIVE CLERK	08846A	1.0	153,809	1.0	153,809
ADMINISTRATOR/DIRECTOR (CASA)(JUDICIAL)	08843A	1.0	139,047	1.0	139,047
ADMINISTRATOR - CLERK (FAMILY COURT)	08843A	1.0	133,638	1.0	133,638
DEPUTY EXECUTIVE	08841A	1.0	127,945	1.0	127,945
SENIOR POLICY ASSOCIATE	08838A	1.0	111,959	1.0	111,959
DIRECTOR OF INTERGOVERNMENTAL RELATIONS	08840A	1.0	111,799	1.0	111,799
DEPUTY ADMINISTRATIVE CLERK (JUDICIAL)	08834A	1.0	99,316	1.0	99,316
STAFF ATTORNEY V (JUDICIAL)	08836A	3.0	286,107	3.0	287,679
STAFF ATTORNEY V	08836A	1.0	93,762	1.0	93,762
DEPUTY ADMINISTRATOR/CLERK	08834A	2.0	186,076	2.0	189,192
DEPUTY DIRECTOR-COMMUNITY AFFAIRS	08834A	2.0	185,184	2.0	185,184
ADMINISTRATIVE MANAGER	08834A	1.0	91,417	1.0	91,417
EXECUTIVE DIRECTOR/EXECUTIVE	08831A	1.0	84,605	1.0	85,451
STAFF ATTORNEY III	08832A	8.0	638,693	8.0	641,655
PROJECT MANAGER (JUDICIAL)	08830A	1.0	78,728	1.0	78,728
EXECUTIVE DIRECTOR	08836A	1.0	77,161	1.0	79,983
PRINCIPAL SUPERVISORY CLERK	08830A	1.0	76,526	1.0	79,485
PRINCIPAL PLANNING AND PROGRAM SPECIALIST	05728A	2.0	144,900	2.0	144,900
EXECUTIVE DIRECTOR/EXECUTIVE	08831A	2.0	137,458	2.0	139,659
COURT REPORTER	00127A	15.0	1,017,284	15.0	1,017,284
ASSISTANT INTAKE SUPERVISOR (FAMILY COURT)	08828A	6.0	397,843	6.0	402,002
ASSOCIATE EXECUTIVE ASSISTANT	08826A	1.0	64,558	1.0	64,558
COORDINATOR SPECIAL PROJECTS (JUCICIAL)	08827A	2.0	124,296	2.0	124,923
CASA COORDINATOR	05722A	1.0	59,935	1.0	59,935
SUPERVISING DEPUTY CLERK (FAMILY COURT)	0J322A	6.0	352,264	6.0	352,264
SOCIAL CASEWORKER II (JUDICIAL)	05724A	8.0	457,259	8.0	462,089
VOLUNTEER COORDINATOR	0J322A	1.0	54,752	1.0	54,752
ADMINISTRATIVE ASSISTANT	0J320A	1.0	53,167	1.0	53,167
ADMINISTRATIVE COORDINATOR	0J320A	1.0	53,167	1.0	53,167
MEDIATION COUNSELOR	0J320A	5.0	258,350	5.0	259,511
EXECUTIVE SECRETARY	08823A	2.0	103,224	2.0	105,294
DEPUTY CLERK	0J320A	22.9	1,140,715	22.9	1,154,109
SENIOR ADMINISTRATIVE AIDE	0J317A	3.0	147,039	3.0	147,039
SOCIAL CASEWORKER (JUDICIAL)	0J322A	2.0	94,028	2.0	97,842
ADMINISTRATIVE ASSISTANT (JUDICIAL)	0J320A	1.0	46,844	1.0	46,844
DEPUTY CLERK (JUDICIAL)	0J320A	3.0	136,695	3.0	140,883
ELECTRONIC COURT REPORTER	00119A	9.6	421,324	9.6	424,925
DOMESTIC VIOLENCE LIAISON	0J318A	1.0	41,237	1.0	42,676
ADMINISTRATIVE ASSISTANT	0J315A	2.0	82,061	2.0	82,061
SENIOR DATA ENTRY OPERATOR	0J312A	12.3	482,411	12.3	484,434
ADMINISTRATIVE ASSISTANT (JUDICIAL)	08814A	1.0	38,872	1.0	39,889

Personnel

Judicial Department - Constitution Family Court

	Grade	FY 2014		FY 2015	
		FTE	Cost	FTE	Cost
FISCAL CLERK	0J310A	1.0	38,523	1.0	39,186
CLERK TYPIST	0J305A	1.0	36,585	1.0	36,585
ADMINISTRATIVE ASSISTANT II	08815A	0.6	21,882	0.6	22,320
CLERK SECRETARY	0J314A	1.0	36,024	1.0	36,671
DATA ENTRY AIDE (JUDICIAL)	0J310A	6.3	210,980	6.3	212,354
DATA ENTRY AIDE	0J310A	4.0	131,569	4.0	133,729
Subtotal		173.8	\$12,499,331	173.8	\$12,563,414
Overtime		-	37,302	-	37,302
Turnover		-	(806,440)	-	(842,384)
Subtotal		-	(\$769,138)	-	(\$805,082)
Total Salaries		173.8	\$11,730,193	173.8	\$11,758,332
Benefits					
Payroll Accrual			46,760		46,885
FICA			836,197		843,383
Retiree Health			637,084		609,250
Health Benefits			2,008,427		2,160,436
Retirement			2,735,375		2,785,449
Workers Compensation			1,800		1,800
Subtotal			\$6,265,643		\$6,447,203
Total Salaries and Benefits		173.8	\$17,995,836	173.8	\$18,205,535
Cost Per FTE Position (Excluding Temporary and Seasonal)			\$103,567		\$104,774
Statewide Benefit Assessment			\$496,828		\$498,143
Payroll Costs		173.8	\$18,492,664	173.8	\$18,703,678
Purchased Services					
Information Technology			40,000		40,000
Clerical and Temporary Services			271,151		271,481
Management & Consultant Services			76,000		76,000
Legal Services			14,000		14,000
Other Contracts			97,787		97,805
Training and Educational Services			78,298		78,298
Design and Engineering Services			7,385		7,385
Subtotal			\$584,621		\$584,969
Total Personnel		173.8	\$19,077,285	173.8	\$19,288,647
Distribution By Source Of Funds					
General Revenue		161.8	\$17,448,955	161.8	\$17,646,205
Federal Funds		11.9	\$1,628,330	11.9	\$1,642,442
Total All Funds		173.8	\$19,077,285	173.8	\$19,288,647

Performance Measures

Judicial Department - Constitution Family Court

Timeliness of Wayward/Delinquent Cases Suitable for Non-Judicial Processing Diversion

The Family Court has a Juvenile Services Unit that processes cases of juvenile, first-time offenders who have committed less serious offenses to be handled outside of court with no arraignment. The figures below represent the percentage of cases suitable for non-judicial processing that were diverted within 45 days of filing.

	2011	2012	2013	2014	2015
Target	80%	80%	80%	80%	80%
Actual	78%	84%	81%	--	--

Performance for this measure is reported by calendar year and is current as of 6/30/2013.

Timeliness of Wayward/Delinquent Cases Requiring Court Involvement Adjudication

The figures below represent the percentage of cases requiring court involvement that are adjudicated within 180 days of filing.

	2011	2012	2013	2014	2015
Target	75%	75%	75%	75%	75%
Actual	59%	55%	55%	--	--

Performance for this measure is reported by calendar year and is current as of 6/30/2013.

Timeliness of Child Protection Case Adjudication

The figures below represent the percentage of child protection cases that are adjudicated within 180 days of filing.

	2011	2012	2013	2014	2015
Target	65%	65%	65%	65%	65%
Actual	39%	46%	46%	--	--

Performance for this measure is reported by calendar year and is current as of 6/30/2013.

Timeliness of Divorce Case Disposition

The figures below represent the percentage of divorce cases disposed within 365 days. During a specified time period, if the court is able to dispose more cases than those filed, the disposition rate will exceed 100 percent, thereby reducing the number of cases pending (backlog).

	2011	2012	2013	2014	2015
Target	100%	100%	100%	100%	100%
Actual	99.8%	104%	99%	--	--

Performance for this measure is reported by calendar year and is current as of 6/30/2013.

The Program

Judicial Department - Constitution District Court

Program Mission

Adjudicate the cases within the jurisdiction of the District Court in a timely and fair manner.

Maintain a complete and accurate record for every case.

Program Description

The District Court consists of a chief judge, an administrative judge and associate judges. The court is also served by two magistrates. The program budget for the District Court includes the cost of operation for the Court itself and the operation of the clerk's offices. The District Court handles all misdemeanor cases, all civil cases where the amount in dispute is under \$5,000, trespass and ejection cases between landlords and tenants, and all small claims, which includes certain civil cases where the amount in dispute is under \$2,500. The District Court also has concurrent jurisdiction with the Superior Court over all matters in which the amount in dispute is greater than \$5,000 but less than \$10,000. The District Court handles most felony bail hearings in capital and other serious cases. The District Court also holds hearings on commitments under the mental health and drug abuse laws and handles certain agency appeals. The Court has four locations, in Providence, Kent, Newport and Washington Counties, with a clerk's office at each location. The clerks' offices maintain all the records for the Court. As with the other courts, all papers are filed in the clerk's office. The office creates a file for every case and maintains an up-to-date record on what has happened in the case. In addition, the Pretrial Services Unit was established in FY 2002 to provide pre-arraignment and post-arraignment services to defendants.

Statutory History

The District Court is a statutorily authorized court. The powers and jurisdiction of the Court are defined in Title 8 Chapter 8 of the Rhode Island General Laws.

The Budget

Judicial Department - Constitution District Court

	2012 Audited	2013 Audited	2014 Enacted	2014 Revised	2015 Recommend
Expenditures By Subprogram					
Operations	11,643,985	11,825,392	12,843,456	12,415,149	12,291,337
Total Expenditures	\$11,643,985	\$11,825,392	\$12,843,456	\$12,415,149	\$12,291,337
Expenditures By Object					
Personnel	9,963,288	10,069,829	11,169,682	10,701,009	10,573,519
Operating Supplies and Expenses	273,460	394,119	345,092	406,034	409,712
Assistance and Grants	1,338,139	1,335,081	1,283,762	1,283,606	1,283,606
Subtotal: Operating Expenditures	11,574,887	11,799,029	12,798,536	12,390,649	12,266,837
Capital Purchases and Equipment	69,098	26,363	44,920	24,500	24,500
Total Expenditures	\$11,643,985	\$11,825,392	\$12,843,456	\$12,415,149	\$12,291,337
Expenditures By Funds					
General Revenue	11,308,170	11,297,285	12,545,634	12,122,347	11,998,535
Federal Funds	97,352	53,662	-	-	-
Restricted Receipts	238,463	474,445	297,822	292,802	292,802
Total Expenditures	\$11,643,985	\$11,825,392	\$12,843,456	\$12,415,149	\$12,291,337

Personnel

Judicial Department - Constitution

District Court

	Grade	FY 2014		FY 2015	
		FTE	Cost	FTE	Cost
Unclassified					
CHIEF JUDGE DISTRICT COURT	08807F	1.0	180,541	1.0	180,541
ADMINISTRATIVE JUDGE	08805F	1.0	175,318	1.0	175,318
MAGISTRATE	08803F	2.0	332,255	2.0	332,255
ASSOCIATE JUDGE, DISTRICT COURT	08810F	11.0	1,731,316	11.0	1,731,316
ADMINISTRATIVE CLERK	08846A	1.0	155,832	1.0	155,832
DEPUTY EXECUTIVE	08841A	1.0	127,375	1.0	127,375
CHIEF CLERK OF DISTRICT COURTS	08840A	1.0	101,936	1.0	101,936
ASSISTANT ADMINISTRATOR/POLICY & PROGRAMS	04437A	1.0	101,555	1.0	101,555
ASSISTANT ADMINISTRATOR/POLICY & PROGRAMS	08837A	1.0	88,177	1.0	88,177
ADMINISTRATIVE CLERK (DISTRICT COURT)	04433A	1.0	87,723	1.0	88,079
CLERK (WASHINGTON COUNTY)	04432A	1.0	87,614	1.0	87,614
CLERK (NEWPORT COUNTY)	04432A	1.0	86,663	1.0	86,663
ADMINISTRATIVE CLERK	04429A	2.0	146,559	2.0	146,559
SUPERVISING CLERK	04426A	2.0	132,807	2.0	134,924
ADMINISTRATIVE CLERK OF OFFICE SERVICES	04427A	1.0	65,110	1.0	65,110
DEPUTY CLERK I	04424A	3.0	188,477	3.0	188,477
DEPUTY CHIEF INVESTIGATOR	04426A	1.0	62,491	1.0	62,491
DEPUTY CHIEF INVESTIGATOR	04426A	2.0	123,562	2.0	123,562
COORDINATOR SPECIAL PROJECTS (JUCICIAL)	08827A	1.0	59,415	1.0	61,977
ASSOCIATE EXECUTIVE ASSISTANT	08826A	2.0	112,327	2.0	114,300
SUPERVISING DEPUTY CLERK-TRAINING OFFICER	04423A	17.0	927,852	17.0	942,979
OFFICE MANAGER	04424A	2.0	108,540	2.0	110,143
ADMINISTRATIVE ASSISTANT TO CHIEF	08826A	1.0	53,344	1.0	55,258
ASSISTANT CLERK/RESEARCH	04418A	1.0	49,635	1.0	49,635
GENERAL OPERATIONS ASSISTANT	04414A	1.0	42,923	1.0	42,923
ADMINISTRATIVE ASSISTANT	04416A	1.0	41,609	1.0	41,609
SENIOR OPERATIONS CLERK	04416A	6.0	231,921	6.0	237,820
DATA ENTRY OPERATOR	04412A	11.0	384,772	11.0	386,377
RECORDS CLERK/DATA ENTRY AIDE	04410A	18.0	584,395	18.0	591,013
RECORDS AIDE (JUDICIARY)	04410A	1.0	31,589	1.0	32,150
Subtotal		96.0	\$6,603,633	96.0	\$6,643,968
Overtime		-	33,000	-	33,000
Turnover		-	(99,055)	-	(305,623)
Subtotal		-	(\$66,055)	-	(\$272,623)
Total Salaries		96.0	\$6,537,578	96.0	\$6,371,345
Benefits					
Payroll Accrual			26,019		25,513
FICA			454,537		449,909
Retiree Health			293,320		275,139
Health Benefits			1,262,450		1,326,872
Retirement			1,758,123		1,755,901
Subtotal			\$3,794,449		\$3,833,334

Personnel

Judicial Department - Constitution District Court

	Grade	FY 2014		FY 2015	
		FTE	Cost	FTE	Cost
Total Salaries and Benefits		96.0	\$10,332,027	96.0	\$10,204,679
Cost Per FTE Position (Excluding Temporary and Seasonal)			\$107,625		\$106,299
Statewide Benefit Assessment			\$276,446		\$271,074
Payroll Costs		96.0	\$10,608,473	96.0	\$10,475,753
Purchased Services					
Clerical and Temporary Services			43,003		48,233
Legal Services			4,533		4,533
Other Contracts			45,000		45,000
Subtotal			\$92,536		\$97,766
Total Personnel		96.0	\$10,701,009	96.0	\$10,573,519
Distribution By Source Of Funds					
General Revenue		93.0	\$10,501,342	93.0	\$10,373,852
Restricted Receipts		3.0	\$199,667	3.0	\$199,667
Total All Funds		96.0	\$10,701,009	96.0	\$10,573,519

Performance Measures

Judicial Department - Constitution District Court

Timeliness of Misdemeanor Case Disposition

The figures below represent the percentage of misdemeanor cases disposed within 60 days of filing.

	2011	2012	2013	2014	2015
Target	90%	90%	90%	90%	90%
Actual	75%	73%	70%	--	--

Performance for this measure is reported by calendar year and is current as of 6/30/2013.

The Program

Judicial Department - Constitution Traffic Tribunal

Program Mission

Adjudicate the cases within the jurisdiction of the Traffic Tribunal in a timely and fair manner.

Maintain a complete and accurate record for every case.

Program Description

The Traffic Tribunal was created effective July 1, 1999. It is the successor to the Administrative Adjudication Court. It consists of associate judges and magistrates. It is under the supervision of the chief magistrate, who is the administrative head of the Traffic Tribunal with the power to make rules for regulating practice, procedure and business within the Traffic Tribunal.

The Traffic Tribunal hears and determines civil traffic violations. It has exclusive jurisdiction over certain offenses and concurrent jurisdiction with the municipal courts over others. The Traffic Tribunal hears certain administrative appeals for the Registry of Motor Vehicles. The appeals panel of the Traffic Tribunal hears appeals from the Traffic Tribunal and the municipal courts. The Traffic Tribunal does not hear those offenses committed in places within the exclusive jurisdiction of the United States, or criminal motor vehicle offenses such as driving so as to endanger resulting in death, and driving while under the influence of alcohol and drugs, which state law specifies will be heard under the jurisdiction of other courts. The Traffic Tribunal currently sits at its main courthouse in the John O. Pastore Center, 670 New London Avenue in Cranston; Traffic Tribunal also sits in Wakefield.

Statutory History

The powers and jurisdiction of the Traffic Tribunal are defined in Title 8 Chapter 8.2 of the Rhode Island General Laws. The 1999 session of the General Assembly passed Senate Bill S932 entitled the Rhode Island Traffic Safety and Accountability Act of 1999. This act abolished the Administrative Adjudication Court effective July 1, 1999 and created the Traffic Tribunal.

The Budget

Judicial Department - Constitution Traffic Tribunal

	2012 Audited	2013 Audited	2014 Enacted	2014 Revised	2015 Recommend
Expenditures By Subprogram					
Operations	8,192,012	7,933,583	8,090,350	8,580,578	8,760,119
Total Expenditures	\$8,192,012	\$7,933,583	\$8,090,350	\$8,580,578	\$8,760,119
Expenditures By Object					
Personnel	7,276,173	7,017,863	7,226,786	7,632,699	7,792,452
Operating Supplies and Expenses	373,181	467,820	356,805	504,214	507,214
Assistance and Grants	483,586	426,892	471,111	426,665	443,453
Subtotal: Operating Expenditures	8,132,940	7,912,575	8,054,702	8,563,578	8,743,119
Capital Purchases and Equipment	59,072	21,008	35,648	17,000	17,000
Total Expenditures	\$8,192,012	\$7,933,583	\$8,090,350	\$8,580,578	\$8,760,119
Expenditures By Funds					
General Revenue	8,192,012	7,933,583	8,090,350	8,580,578	8,760,119
Total Expenditures	\$8,192,012	\$7,933,583	\$8,090,350	\$8,580,578	\$8,760,119

Personnel

Judicial Department - Constitution

Traffic Tribunal

	Grade	FY 2014		FY 2015	
		FTE	Cost	FTE	Cost
Unclassified					
JUDGE ADMINISTRATIVE ADJUDICATION COURT	08803F	2.0	337,837	2.0	337,837
CHIEF MAGISTRATE	08810F	1.0	168,739	1.0	168,739
MAGISTRATE TRAFFIC TRIBUNAL	08803F	5.0	793,917	5.0	793,917
EXECUTIVE DIRECTOR (JUDICIAL)	08844A	1.0	143,241	1.0	143,647
ADMINISTRATOR/ADMINISTRATIVE	04438A	1.0	109,106	1.0	109,106
ASSISTANT LEGAL COUNSEL (TRANSPORTATION)	08822A	0.6	59,935	0.6	59,935
SENIOR POLICY ASSOCIATE	08838A	1.0	87,494	1.0	92,040
PRINCIPAL SUPERVISORY CLERK	08830A	1.0	80,439	1.0	80,439
ADMINISTRATIVE CLERK I	04429A	1.0	77,789	1.0	77,789
BUSINESS MANAGEMENT OFFICER (COURTS)	04435A	1.0	74,770	1.0	74,770
COORDINATOR SPECIAL PROJECTS (JUCICIAL)	08827A	1.0	71,602	1.0	71,602
ADMINISTRATIVE CLERK OF OFFICE SERVICES	04427A	3.0	210,572	3.0	210,703
FISCAL MANAGEMENT OFFICER (JUDICIAL)	08832A	1.0	67,640	1.0	70,114
PROJECT COORDINATOR	04426A	1.0	65,332	1.0	65,332
PRINCIPAL ASSISTANT ADMINISTRATOR	04425A	3.0	181,092	3.0	183,222
DEPUTY CLERK	04420A	4.6	252,114	4.6	252,114
SUPERVISING DEPUTY CLERK-TRAINING OFFICER	04423A	1.0	52,118	1.0	54,615
SECURITY OFFICER	04419A	9.0	417,911	9.0	419,021
DEPUTY CLERK I	04424A	1.0	45,974	1.0	47,577
SENIOR OPERATIONS CLERK	04416A	2.0	85,753	2.0	85,753
GENERAL OPERATIONS ASSISTANT	04414A	6.0	252,755	6.0	252,755
ADMINISTRATIVE ASSISTANT	04413A	5.0	198,748	5.0	198,748
ASSISTANT ADMINISTRATIVE SECRETARY	04412A	1.0	38,238	1.0	38,238
DATA ENTRY OPERATOR	04412A	10.0	370,214	10.0	370,214
ASSISTANT SUPERVISING CLERK	04422A	1.0	34,342	1.0	34,342
RECORDS CLERK/DATA ENTRY AIDE	04410A	14.0	463,494	14.0	468,139
Subtotal		78.2	\$4,741,166	78.2	\$4,760,708
Overtime		-	12,000	-	12,000
Turnover		-	(251,282)	-	(218,993)
Subtotal		-	(\$239,282)	-	(\$206,993)
Total Salaries		78.2	\$4,501,884	78.2	\$4,553,715
Benefits					
Payroll Accrual			17,960		18,186
FICA			320,799		326,991
Retiree Health			278,018		269,212
Health Benefits			917,134		996,356
Retirement			1,156,990		1,184,767
Subtotal			\$2,690,901		\$2,795,512

Personnel

Judicial Department - Constitution Traffic Tribunal

	Grade	FY 2014		FY 2015	
		FTE	Cost	FTE	Cost
Total Salaries and Benefits		78.2	\$7,192,785	78.2	\$7,349,227
Cost Per FTE Position (Excluding Temporary and Seasonal)			\$91,979		\$93,980
Statewide Benefit Assessment			\$190,820		\$193,225
Payroll Costs		78.2	\$7,383,605	78.2	\$7,542,452
Purchased Services					
Clerical and Temporary Services			94,094		95,000
Other Contracts			155,000		155,000
Subtotal			\$249,094		\$250,000
Total Personnel		78.2	\$7,632,699	78.2	\$7,792,452
Distribution By Source Of Funds					
General Revenue		78.2	\$7,632,699	78.2	\$7,792,452
Total All Funds		78.2	\$7,632,699	78.2	\$7,792,452

Performance Measures

Judicial Department - Constitution Traffic Tribunal

Timeliness of Summonses Disposition

The figures below represent the percentage of traffic summonses disposed within 60 days.

	2011	2012	2013	2014	2015
Target	100%	100%	100%	100%	100%
Actual	96%	96%	95%	--	--

Performance for this measure is reported by calendar year and is current as of 6/30/2013.

The Program

Judicial Department - Constitution Worker's Compensation Court

Program Mission

Hear all disputes regarding workers' compensation claims.

Decide all controversies efficiently, effectively, and economically.

Program Description

The Workers' Compensation Court is a member of the unified judicial system and has the same authority and power to subpoena and to cite and punish for civil contempt as exists in the Superior Court. It hears and decides all controversies as they pertain to Workers' Compensation in an efficient, effective, and economical manner. Presently, it has nine judges and one chief judge as well as support staff which includes administrators, hearing reporters, and clerical staff. It is supported from the Workers' Compensation Administrative Fund.

Upon the filing of a petition for benefits arising out of a work-related injury case, a case file is set up and notices are sent to all parties. Before proceeding to a full evidentiary hearing, a judge conducts a pretrial conference, with a view of expediting the case and reducing the issues in dispute to a minimum. If the matter can not be resolved informally the judge must enter a pretrial order as to the right of the employee to receive benefits (approximately 70 percent of all litigation is concluded at this point).

Those cases not resolved at pretrial are heard by the same judge for trial. At the trial, a judge will hear all questions. The judge will then decide the merits of the controversy pursuant to the law and a fair preponderance of the evidence. From this decision a decree is entered. At this stage either party may appeal to the Appellate Division. The Appellate Division consists of three judges assigned by the Chief Judge, none of whom is the Trial Judge.

The Appellate Division judges review the transcript and the record of the case along with the appellant's reasons for appeal and memoranda of law. The Appellate Division then decides the matter and a final decree of the Appellate Division is entered. If either party is aggrieved by the decision of the Appellate Division, they may petition the Supreme Court for a writ of certiorari. Upon petition, the Supreme Court may review any decree of the Workers' Compensation Court.

Statutory History

Title 28, Chapters 29 through 38 of the Rhode Island General Laws includes provisions relating to the Workers' Compensation Court.

The Budget

Judicial Department - Constitution Worker's Compensation Court

	2012 Audited	2013 Audited	2014 Enacted	2014 Revised	2015 Recommend
Expenditures By Subprogram					
Operations	7,204,814	7,359,644	7,842,060	7,834,530	7,932,640
Total Expenditures	\$7,204,814	\$7,359,644	\$7,842,060	\$7,834,530	\$7,932,640
Expenditures By Object					
Personnel	5,882,794	5,769,270	6,399,778	6,457,890	6,538,399
Operating Supplies and Expenses	494,225	695,207	611,098	573,459	591,060
Assistance and Grants	797,935	815,395	803,181	803,181	803,181
Subtotal: Operating Expenditures	7,174,954	7,279,872	7,814,057	7,834,530	7,932,640
Capital Purchases and Equipment	29,860	79,772	28,003	-	-
Total Expenditures	\$7,204,814	\$7,359,644	\$7,842,060	\$7,834,530	\$7,932,640
Expenditures By Funds					
Restricted Receipts	7,204,814	7,359,644	7,842,060	7,834,530	7,932,640
Total Expenditures	\$7,204,814	\$7,359,644	\$7,842,060	\$7,834,530	\$7,932,640

Personnel

Judicial Department - Constitution Worker's Compensation Court

	Grade	FY 2014		FY 2015	
		FTE	Cost	FTE	Cost
Unclassified					
CHIEF JUDGE, WORKERS COMPENSATION COURT	08807F	1.0	192,851	1.0	192,851
JUDGE, WORKERS COMPENSATION COURT	08810F	8.0	1,288,241	8.0	1,288,241
ADMINISTRATIVE CLERK (WORKERS COMP COURT)	00846A	1.0	157,735	1.0	157,735
ASSOCIATE JUDGE, DISTRICT COURT	08810F	1.0	150,788	1.0	150,788
ADMINISTRATOR, WORKERS' COMPENSATION	08841A	1.0	124,721	1.0	124,721
DEPUTY ADMINISTRATOR WORKERS'	08837A	1.0	105,812	1.0	105,812
MEDICAL ADVISORY BOARD ADMINISTRATOR	04440A	1.0	104,901	1.0	104,901
ASSISTANT ADMINISTRATOR/POLICY & PROGRAMS	08837A	1.0	98,800	1.0	102,486
EXECUTIVE ASSISTANT (JUDICIAL)	00336A	1.0	97,782	1.0	97,782
PROJECT MANAGER (JUDICIAL)	08830A	1.0	75,697	1.0	78,444
COURT REPORTER	00327A	8.0	554,863	8.0	554,863
PROJECT MANAGER (JUDICIAL)	08530A	1.0	62,688	1.0	64,889
SENIOR ASSISTANT ADMINISTRATOR	00326A	3.0	187,968	3.0	187,968
EXECUTIVE SECRETARY TO CHIEF JUDGE	08825A	1.0	62,061	1.0	62,061
ADMINISTRATIVE ASSISTANT/CONFIDENTIAL	04424A	3.0	176,081	3.0	176,081
LAW CLERK (JUDICIARY)	08823A	2.0	103,732	2.0	103,732
DEPUTY CLERK	00320A	10.0	509,883	10.0	512,074
MEDICAL ADVISORY BOARD COORDINATOR	04418A	1.0	43,430	1.0	43,430
DATA ENTRY OPERATOR	00312A	4.0	141,288	4.0	142,552
Subtotal		50.0	\$4,239,322	50.0	\$4,251,411
Overtime		-	7,500	-	7,500
Turnover		-	(127,181)	-	(127,543)
Subtotal		-	(\$119,681)	-	(\$120,043)
Total Salaries		50.0	\$4,119,641	50.0	\$4,131,368
Benefits					
Payroll Accrual			16,449		16,495
FICA			284,248		287,960
Retiree Health			180,716		173,414
Health Benefits			579,296		624,228
Retirement			1,048,574		1,074,970
Subtotal			\$2,109,283		\$2,177,067
Total Salaries and Benefits		50.0	\$6,228,924	50.0	\$6,308,435
Cost Per FTE Position (Excluding Temporary and Seasonal)			\$124,578		\$126,169
Statewide Benefit Assessment			\$174,766		\$175,264
Payroll Costs		50.0	\$6,403,690	50.0	\$6,483,699

Personnel

Judicial Department - Constitution Worker's Compensation Court

	Grade	FY 2014		FY 2015	
		FTE	Cost	FTE	Cost
Purchased Services					
Information Technology			28,700		28,700
Legal Services			10,500		10,500
Other Contracts			15,000		15,500
Subtotal			\$54,200		\$54,700
Total Personnel		50.0	\$6,457,890	50.0	\$6,538,399
Distribution By Source Of Funds					
Restricted Receipts		50.0	\$6,457,890	50.0	\$6,538,399
Total All Funds		50.0	\$6,457,890	50.0	\$6,538,399

Performance Measures

Judicial Department - Constitution Worker's Compensation Court

Timeliness of Case Disposition at Pretrial

The figures below represent the percentage of workers' compensation claims disposed at pretrial within 90 days of filing.

	2011	2012	2013	2014	2015
Target	90%	90%	90%	90%	90%
Actual	88%	88%	87%	--	--

Performance for this measure is reported by calendar year and is current as of 6/30/2013.

Timeliness of Cases Disposed at Trial

The figures below represent the percentage of workers' compensation cases disposed at trial within 360 days of filing.

	2011	2012	2013	2014	2015
Target	90%	90%	90%	90%	90%
Actual	89%	89%	86%	--	--

Performance for this measure is reported by calendar year and is current as of 6/30/2013.

The Program

Judicial Department - Constitution Judicial Tenure & Discipline

Program Mission

Ensure the integrity of the Rhode Island Court System.

Investigate reasonable allegations of wrongdoing by Rhode Island judges.

Recommend, when appropriate, sanctions to be imposed against Rhode Island judges.

Program Description

The Commission on Judicial Tenure and Discipline, a program of the Rhode Island Judiciary, is responsible for conducting investigations of judges suspected of or charged with misconduct. The commission, upon receiving from any person a verified statement, not unfounded or frivolous, alleging facts indicating that a Justice of the Supreme Court, the Superior Court, the Family Court, the District Court, the Workers' Compensation Court, the Traffic Tribunal and the Probate Court judges or magistrates and judicial officers appointed pursuant to Rhode Island General Laws is guilty of a serious violation of the Code of Judicial Conduct or the Canons of Judicial Ethics, or of a willful and persistent failure to perform his/her duties, or disabling substance abuse, or conduct that brings the judicial office into serious disrepute, or that such a judge has a physical or mental disability that seriously interferes and will continue to interfere with the performance of his/her duties, shall make a preliminary investigation to determine whether formal proceedings shall be instituted and a hearing held. The Commission may, on its own initiative, make such a preliminary investigation, without receiving a verified statement, to determine whether formal proceedings shall be instituted and a hearing held.

When formal proceedings are ordered, the justice is given formal notice of the charges and of the time fixed for a public hearing. The justice is required to appear at the hearing, may be represented by counsel, offer evidence and otherwise participate in said hearing. Recommendation concerning the disciplining of any justice shall be made in a report to the Chief Justice of the Supreme Court. The Supreme Court is required to grant a review if requested by said justice. After the hearing, the Supreme Court may affirm, modify or reject the Commission's recommendation(s).

Statutory History

The Commission on Judicial Tenure and Discipline was established in 1974 under Rhode Island Public Law 1972, Ch. 136, Section 1 for the purpose of conducting investigations upon the filing of a verified complaint or upon its own initiative of the conduct of judges of the Supreme, Superior, Family and District Courts. Subsequent enactments in P.L. 1983, Ch. 26 and P.L. 1990, Ch. 332, Article 1, sec. 13 and P.L. 1991, Ch. 132, sec. 2 as well as P.L. 1991, Ch. 205, sec. 2 and P.L. 1996, Ch. 312 enlarged the jurisdiction to include the Workers' Compensation Court, the Traffic Tribunal as well as all judges of Probate Courts in any city or town in the State of Rhode Island. P.L. 2007, Ch. 178 altered the composition of the Commission.

The Budget

Judicial Department - Constitution Judicial Tenure & Discipline

	2012 Audited	2013 Audited	2014 Enacted	2014 Revised	2015 Recommend
Expenditures By Subprogram					
Operations	105,450	113,327	115,627	115,054	115,513
Total Expenditures	\$105,450	\$113,327	\$115,627	\$115,054	\$115,513
Expenditures By Object					
Personnel	103,324	103,388	113,012	112,340	112,799
Operating Supplies and Expenses	2,126	9,939	2,615	2,714	2,714
Subtotal: Operating Expenditures	105,450	113,327	115,627	115,054	115,513
Total Expenditures	\$105,450	\$113,327	\$115,627	\$115,054	\$115,513
Expenditures By Funds					
General Revenue	105,450	113,327	115,627	115,054	115,513
Total Expenditures	\$105,450	\$113,327	\$115,627	\$115,054	\$115,513

Personnel

Judicial Department - Constitution Judicial Tenure & Discipline

	Grade	FY 2014		FY 2015	
		FTE	Cost	FTE	Cost
Unclassified					
EXECUTIVE ASSISTANT TO THE CHAIRPERSON	08829A	1.0	69,180	1.0	69,180
Subtotal		1.0	\$69,180	1.0	\$69,180
Total Salaries		1.0	\$69,180	1.0	\$69,180
Benefits					
Payroll Accrual			277		277
FICA			5,292		5,292
Retiree Health			4,528		4,323
Health Benefits			5,985		6,455
Retirement			16,638		16,832
Subtotal			\$32,720		\$33,179
Total Salaries and Benefits		1.0	\$101,900	1.0	\$102,359
Cost Per FTE Position (Excluding Temporary and Seasonal)			\$101,900		\$102,359
Statewide Benefit Assessment			\$2,940		\$2,940
Payroll Costs		1.0	\$104,840	1.0	\$105,299
Purchased Services					
Legal Services			7,500		7,500
Subtotal			\$7,500		\$7,500
Total Personnel		1.0	\$112,340	1.0	\$112,799
Distribution By Source Of Funds					
General Revenue		1.0	\$112,340	1.0	\$112,799
Total All Funds		1.0	\$112,340	1.0	\$112,799

Performance Measures

Judicial Department - Constitution Judicial Tenure & Discipline

Timeliness of Verified Complaint Disposition

The figures below represent the percentage of cases closed during a fiscal year that was disposed within 90 days of docketing. Performance data include both cases filed through the end of a fiscal year and cases that were pending at the beginning of the fiscal year.

	2011	2012	2013	2014	2015
Target	100%	100%	100%	100%	100%
Actual	74%	71%	73%	--	--

Performance for this measure is reported by state fiscal year and is current as of 6/30/2013.
